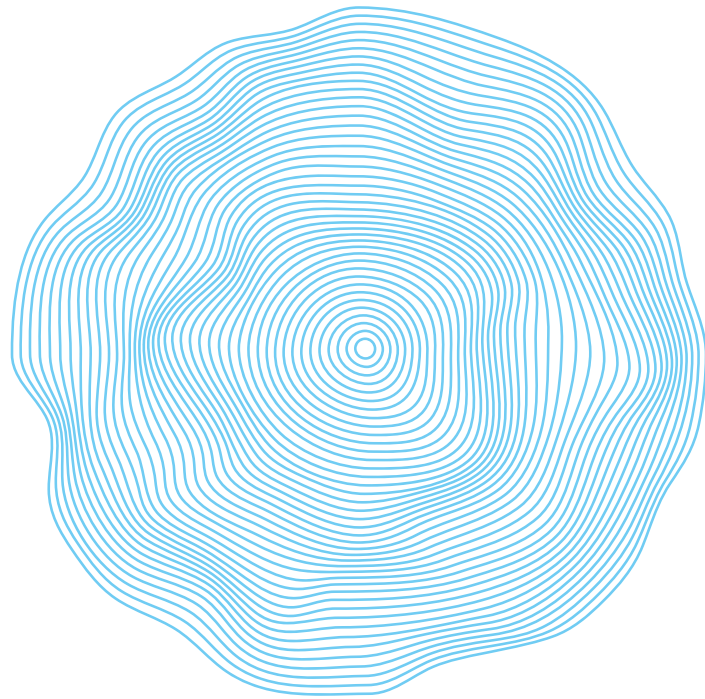




SOBHA HARTLAND



## Where Escaping is staying

Enjoy the perks of living by a crystal lagoon in central Dubai



## Why make Sobha Hartland your home?

Views of Ras Al Khor Wildlife Sanctuary and the crystal lagoon.

Located in the epicentre of the city with major landmarks just minutes away.

2 International schools within the Sobha Hartland Community.

3 lush green parks connected by a central pathway for all residents.

### **Central Park**

Acres of green canopies surround you in this exclusive park in Hartland Estates.

### **Greens East Park**

A park designed for outdoor recreation with an amphitheater, kids' play area, rock-climbing wall and a lot more.

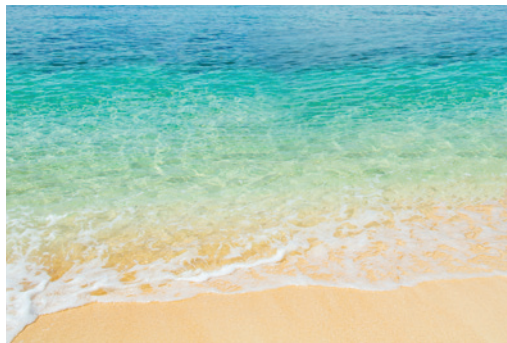
### **Greens West Park**

Bringing the forest to your doorstep in this park that is a doorway to a world far away, yet in the centre of the city.

PRE-LAUNCHING TOWER C AT

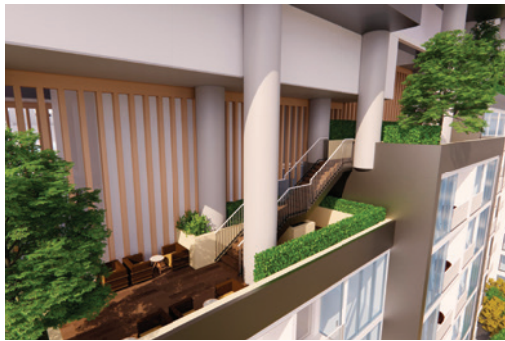
THE

CREST



Caribbean-style crystal lagoon facing residences  
*now have a name*

THE  
CREST



Residential towers with inter-linked Sky Gardens  
*now have a name*

THE  
CREST



Experiential community living  
*now has a name*

THE  
CREST

What does The Crest  
at Sobha Hartland have  
to offer



- Located on the banks of a pristine **CRYSTAL LAGOON**.  
3 inter-connected expansive towers.
- A host of **AMENITIES** spread across the podium level and the landscaped terraces; curated just for you.
- Residential living space that provides endless moments of **EXPERIENCES**.
- Inter-linked **SKYWALK** that brings all 3 towers of The Crest together.







INDOOR  
AMENITIES

THE  
CREST



Health Club with  
changing rooms

Multipurpose Hall



Spin Class Studio



Pilates Studio



## Yoga Studio



OUTDOOR  
AMENITIES

THE  
CREST



Swimming Pool

Kids Play Area



Pentanque  
Boules Lawn



Barbeque Area





Outdoor Gym  
Terrace

Tai Chi Terrace



Inter-linked Sky Gardens  
at different levels



Landscaped Terraces at  
different levels with a  
host of amenities



## Payment Plan\*

1, 2 & 3 BR Apartments from  
**AED 981,000\***

**50%** in next  
4 years

**50%** 2 years  
Post-Completion

\*Offer valid from 01 February to 28 February 2022

THE  
**CREST**

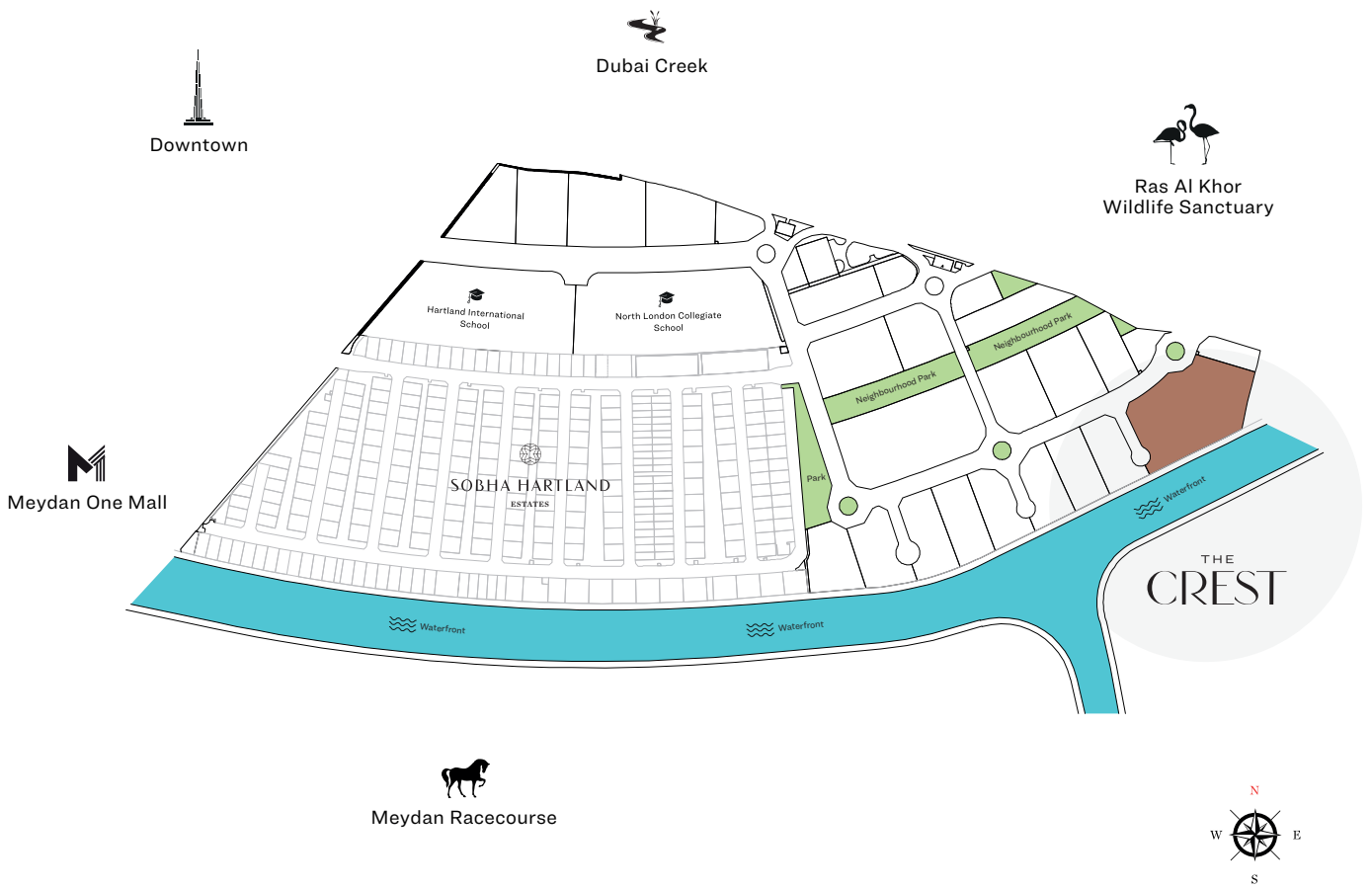
MASTER PLAN

FLOOR PLANS

RESIDENTIAL UNIT PLANS

THE  
CREST

# LOCATION IN THE MASTER PLAN



## APARTMENT FEATURES



Landmark views



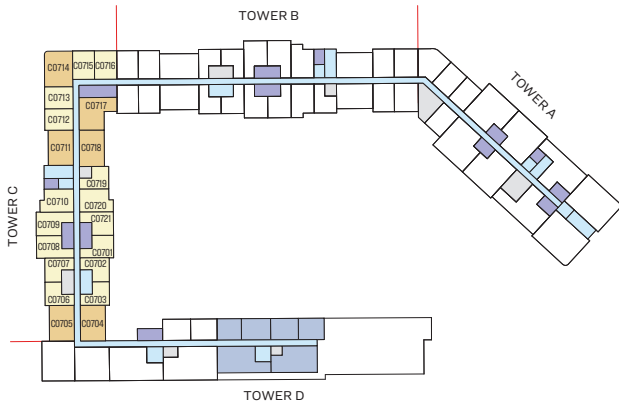
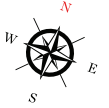
Covered car parking



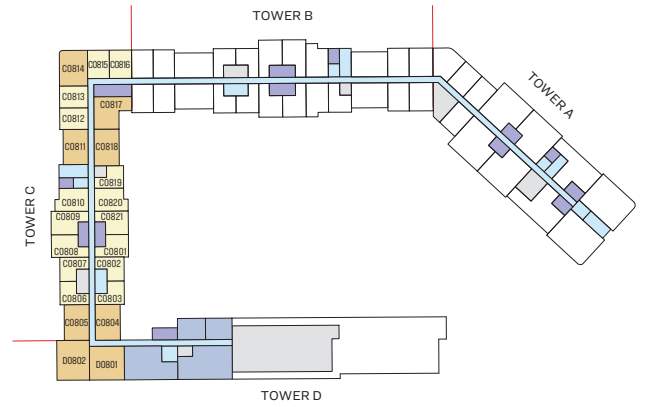
Fully fitted kitchens



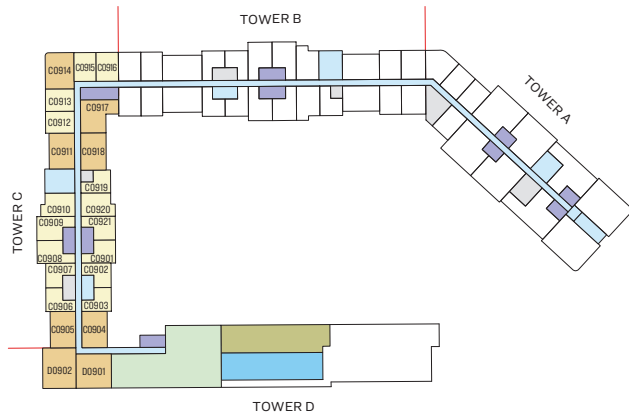
Bedroom wardrobe in all units



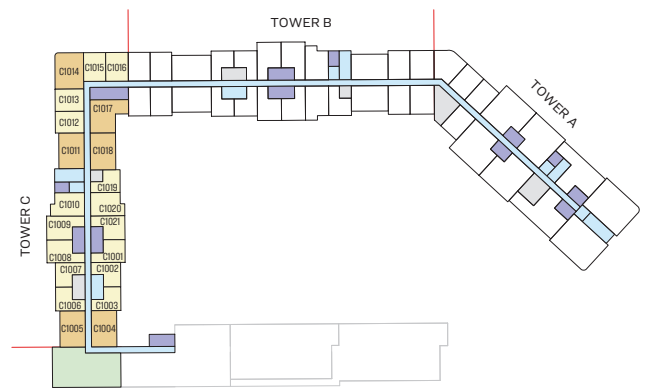
LEVEL-07



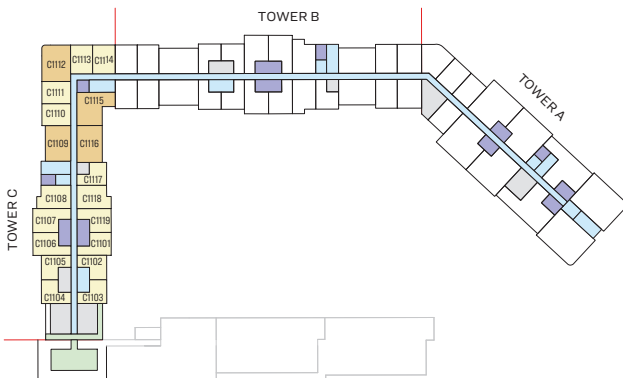
LEVEL-08



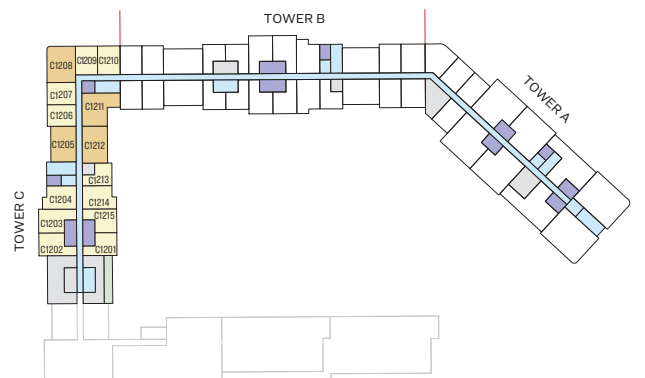
LEVEL-09



LEVEL 10

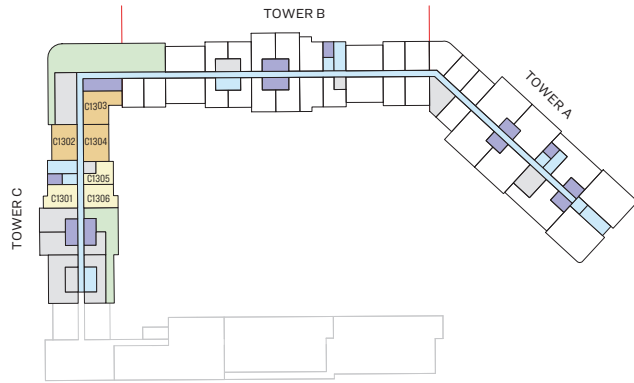
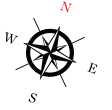


LEVEL 11

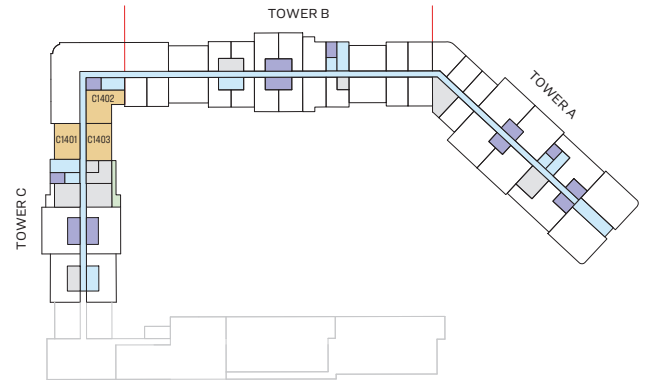


LEVEL 12

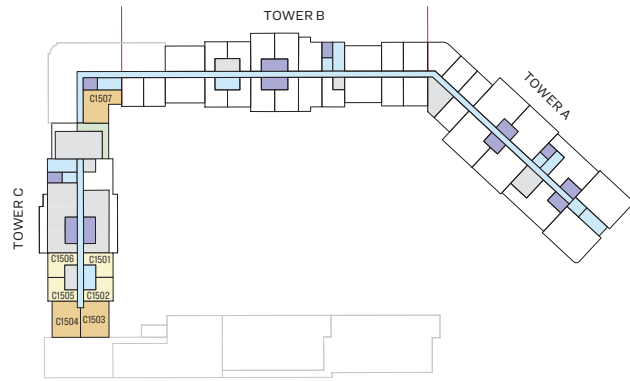
- |   |   |  |
|---|---|--|
| <span style="display: inline-block; width: 15px; height: 15px; background-color: #f9e79f; border: 1px solid black;"></span> 1 BED UNIT                  | <span style="display: inline-block; width: 15px; height: 15px; background-color: #d9d9d9; border: 1px solid black;"></span> SERVICES  | <span style="display: inline-block; width: 15px; height: 15px; background-color: #4db6ac; border: 1px solid black;"></span> SWIMMING POOL      |
| <span style="display: inline-block; width: 15px; height: 15px; background-color: #e67e22; border: 1px solid black;"></span> 2 BED UNIT                  | <span style="display: inline-block; width: 15px; height: 15px; background-color: #675a8e; border: 1px solid black;"></span> LIFT      | <span style="display: inline-block; width: 15px; height: 15px; background-color: #8e8e4d; border: 1px solid black;"></span> SWIMMING POOL DECK |
| <span style="display: inline-block; width: 15px; height: 15px; background-color: #c0392b; border: 1px solid black;"></span> 3 BED UNIT                  | <span style="display: inline-block; width: 15px; height: 15px; background-color: #5dade2; border: 1px solid black;"></span> AMENITIES |  |
| <span style="display: inline-block; width: 15px; height: 15px; background-color: #add8e6; border: 1px solid black;"></span> LOBBIES, CORRIDORS & STAIRS | <span style="display: inline-block; width: 15px; height: 15px; background-color: #90ee90; border: 1px solid black;"></span> LANDSCAPE |  |



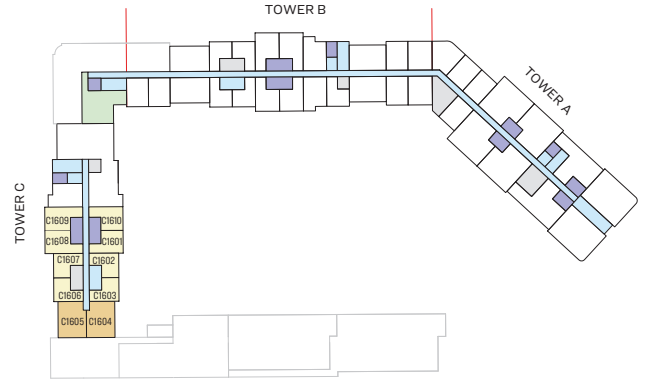
LEVEL 13



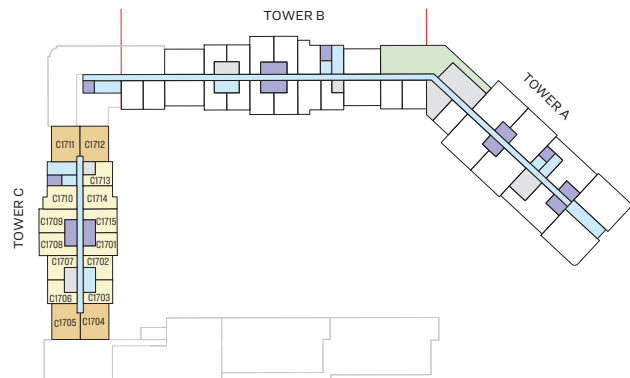
LEVEL 14



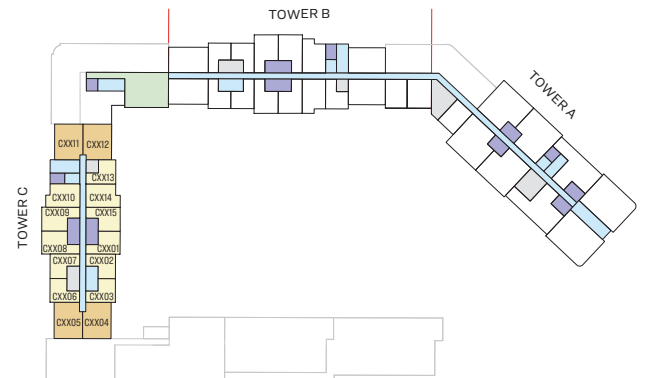
LEVEL 15



LEVEL 16



LEVEL 17



LEVEL 18 - LEVEL 33

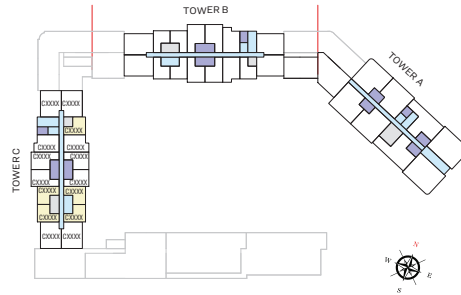
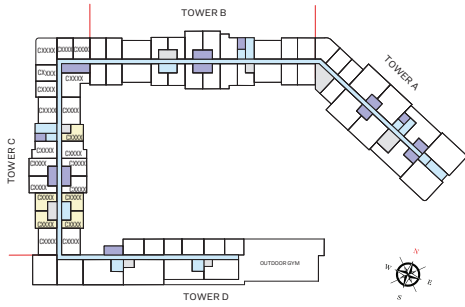
- |  |  |
|--|--|
| <span style="display: inline-block; width: 15px; height: 15px; background-color: #fff9c4; border: 1px solid black; margin-right: 5px;"></span> 1 BED UNIT                  | <span style="display: inline-block; width: 15px; height: 15px; background-color: #e0e0e0; border: 1px solid black; margin-right: 5px;"></span> SERVICES  |
| <span style="display: inline-block; width: 15px; height: 15px; background-color: #ffcc80; border: 1px solid black; margin-right: 5px;"></span> 2 BED UNIT                  | <span style="display: inline-block; width: 15px; height: 15px; background-color: #9c27b0; border: 1px solid black; margin-right: 5px;"></span> LIFT      |
| <span style="display: inline-block; width: 15px; height: 15px; background-color: #d97e50; border: 1px solid black; margin-right: 5px;"></span> 3 BED UNIT                  | <span style="display: inline-block; width: 15px; height: 15px; background-color: #64b5f6; border: 1px solid black; margin-right: 5px;"></span> AMENITIES |
| <span style="display: inline-block; width: 15px; height: 15px; background-color: #bbdefb; border: 1px solid black; margin-right: 5px;"></span> LOBBIES, CORRIDORS & STAIRS | <span style="display: inline-block; width: 15px; height: 15px; background-color: #c8e6c9; border: 1px solid black; margin-right: 5px;"></span> LANDSCAPE |

# 1 BEDROOM APARTMENT

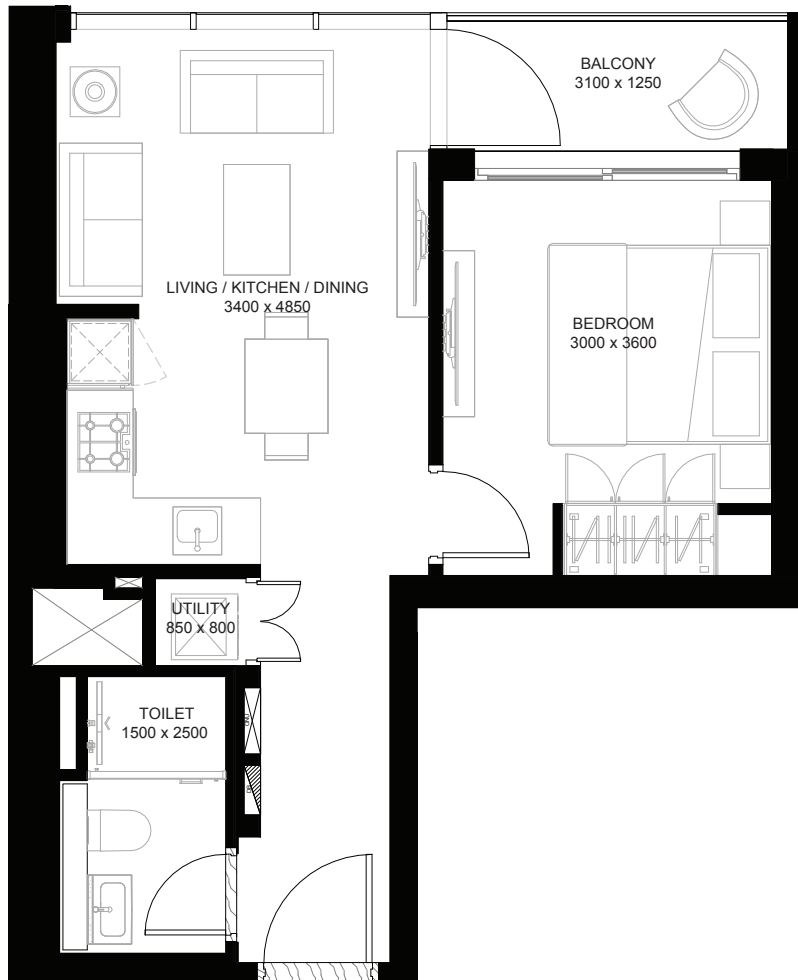
TYPE B (with balcony)

TOTAL SALEABLE AREA

SIZE RANGE = 509.46 SQ.FT. - 518.07 SQ.FT.



UNIT



List of unit numbers with this unit plan:

## VIEWS

### Amenities

C0702, C0703\*, C0719\*, C0802, C0803\*, C0819\*, C0902, C0903\*, C0919\*, C1002, C1003\*, C1019\*, C1102, C1103\*, C1117\*, C1213\*, C1305\*

### Hartland, Waterfront

C0706\*, C0707\*, C0806\*, C0807\*, C0906\*, C0907\*, C1006\*, C1007\*, C1104\*, C1105\*, C1505\*, C1506\*, C1606\*, C1607\*, C1706\*, C1707\*, C1806\*, C1807\*, C1906\*, C1907\*, C2006\*, C2007\*, C2106\*, C2107\*, C2206\*, C2207\*, C2306\*, C2307\*, C2406\*, C2407\*, C2506\*, C2507\*

### Downtown, BK, Hartland, Waterfront

C2606\*, C2607\*, C2706\*, C2707\*, C2806\*, C2807\*, C2906\*, C2907\*, C3006\*, C3007\*, C3106\*, C3107\*, C3206\*, C3207\*, C3306\*, C3307\*

### Amenities, Waterfront

C1501, C1502\*, C1602, C1603\*, C1702, C1703\*, C1713\*, C1802, C1803\*, C1813\*, C1902, C1903\*, C1913\*, C2002, C2003\*, C2013\*, C2102, C2103\*, C2113\*, C2202, C2203\*, C2213\*, C2302, C2303\*, C2313\*, C2402, C2403\*, C2413\*, C2502, C2503\*, C2513\*, C2602, C2603\*, C2613\*, C2702, C2703\*, C2713\*, C2802, C2803\*, C2813\*, C2902, C2903\*, C2913\*, C3002, C3003\*, C3013\*, C3102, C3103\*, C3113\*, C3202, C3203\*, C3213\*, C3302, C3303\*, C3313\*

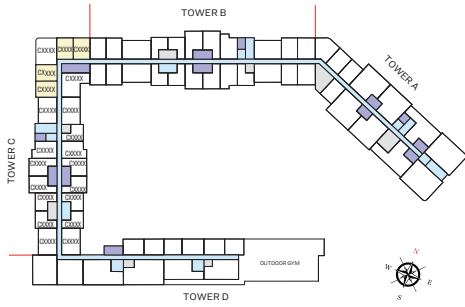
\* These apartments have mirrored units plans of the above



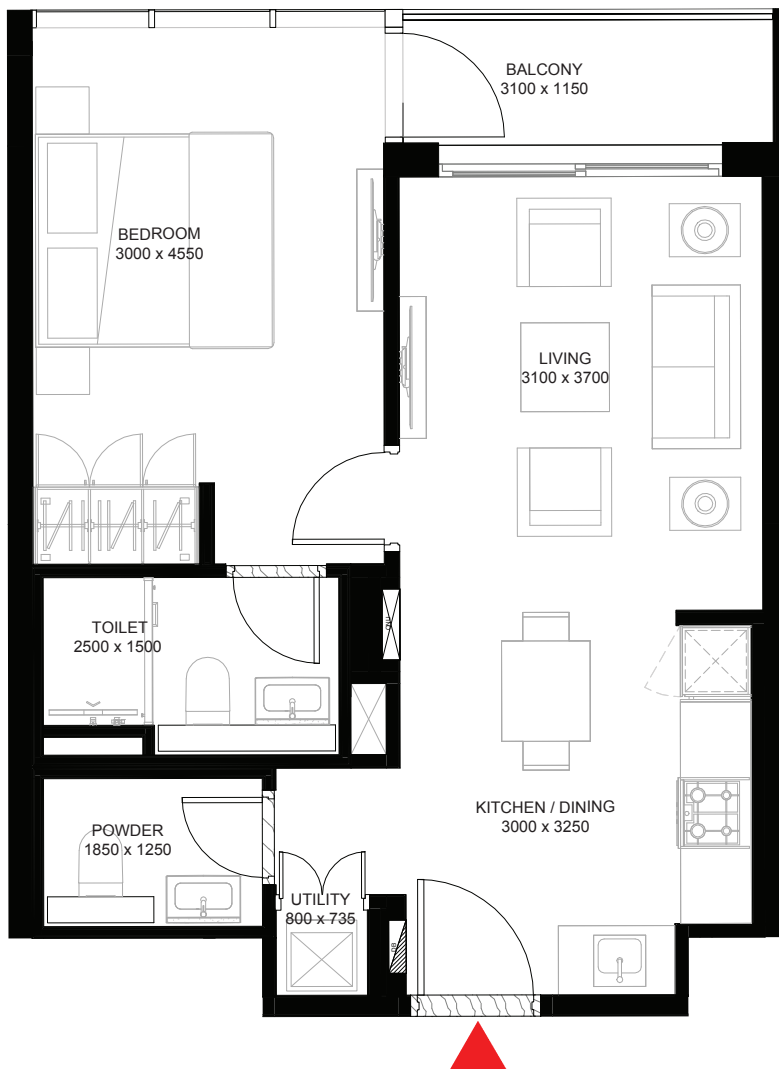
**1 BEDROOM APARTMENT**  
**TYPE A (with powder room + balcony)**

**TOTAL SALEABLE AREA**

SIZE RANGE = 565.00 SQ.FT. - 572.53 SQ.FT.



UNIT



List of unit numbers with this unit plan:

**VIEWS**

**Hartland**

C0712\*, C0713\*, C0715, C0716\*, C0812\*, C0813\*, C0815, C0816\*, C0912\*, C0913\*, C0915, C0916\*, C1012\*, C1013\*, C1015, C1016\*, C1110\*, C1111\*, C1113, C1114\*, C1206\*, C1207\*, C1209, C1210\*

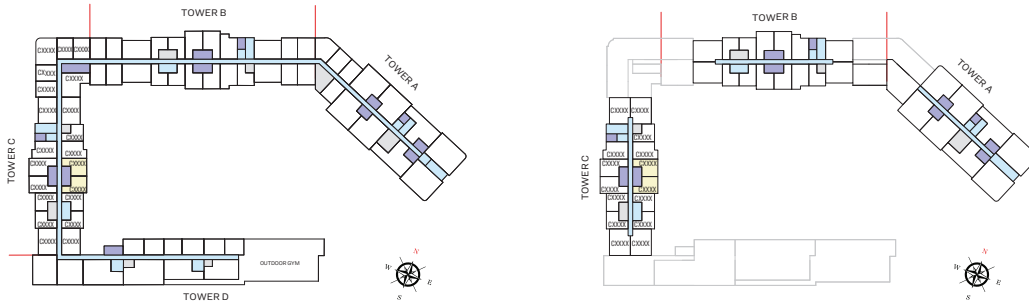
\* These apartments have mirrored units plans of the above

# 1 BEDROOM APARTMENT

TYPE B (with powder room + balcony)

TOTAL SALEABLE AREA

SIZE RANGE = 586.09 SQ.FT. - 608.91 SQ.FT.



UNIT



List of unit numbers with this unit plan:

## VIEWS

### Amenities

C0701, C0721\*, C0801, C0821\*, C0901, C0921\*, C1001, C1021\*, C1101, C1119\*, C1201, C1215\*

### Amenities, Waterfront

C1601, C1610\*, C1701, C1715\*, C1801, C1815\*, C1901, C1915\*, C2001, C2015\*, C2101, C2115\*, C2201, C2215\*, C2301, C2315\*, C2401, C2415\*, C2501, C2515\*, C2601, C2615\*, C2701, C2715\*, C2801, C2815\*, C2901, C2915\*, C3001, C3015\*, C3101, C3115\*, C3201, C3215\*, C3301, C3315\*

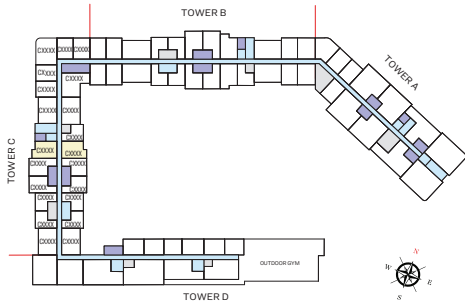
\* These apartments have mirrored units plans of the above

# 1 BEDROOM APARTMENT

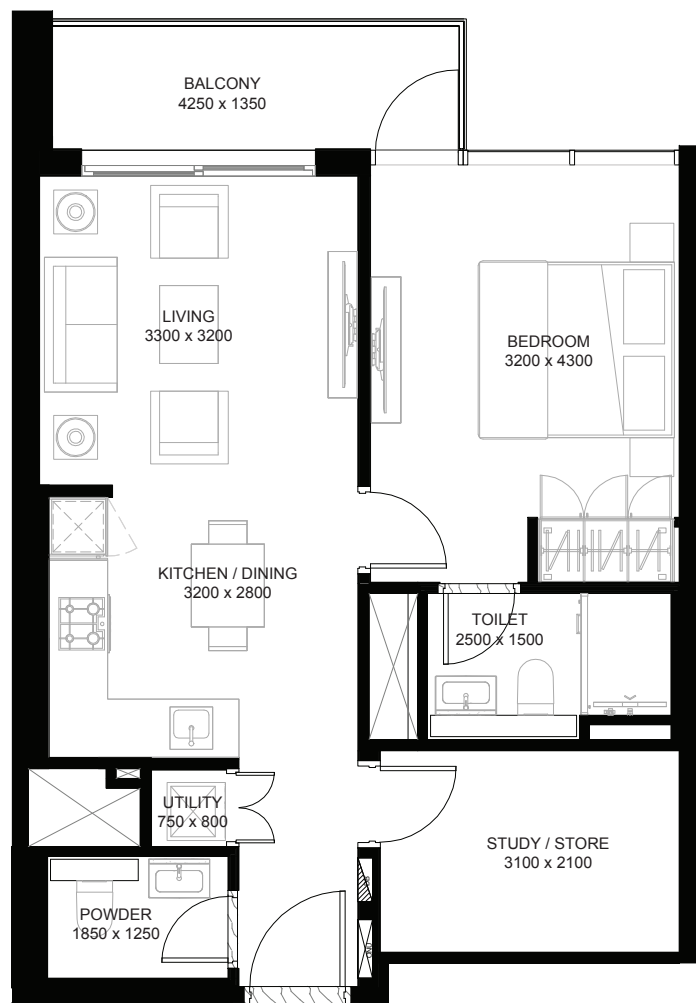
TYPE A (with study/store + balcony)

TOTAL SALEABLE AREA

SIZE RANGE = 673.61 SQ.FT. - 685.55 SQ.FT.



UNIT



List of unit numbers with this unit plan:

## VIEWS

### Downtown, Hartland

C1710, C1810, C1910, C2010, C2110, C2210, C2310

### Downtown, BK, Hartland

C2410, C2510, C2610, C2710, C2810, C2910, C3010, C3110, C3210, C3310

### Amenities, Waterfront

C1714\*, C1814\*, C1914\*, C2014\*, C2114\*, C2214\*, C2314\*, C2414\*, C2514\*, C2614\*, C2714\*, C2814\*, C2914\*, C3014\*, C3114\*, C3214\*, C3314\*

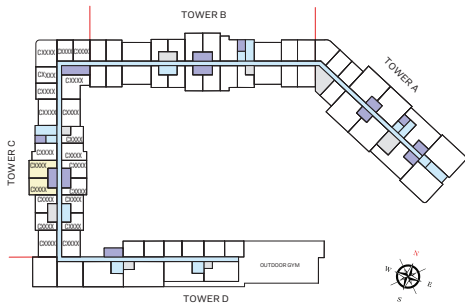
\* These apartments have mirrored units plans of the above

# 1 BEDROOM APARTMENT

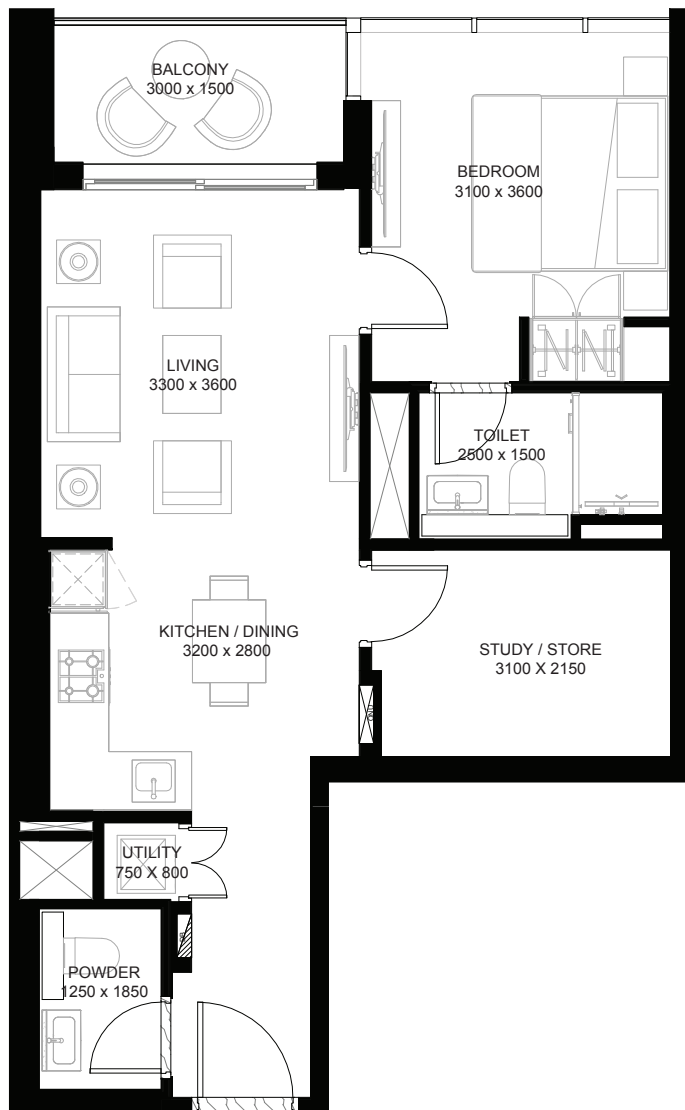
TYPE B (with study/store + balcony)

TOTAL SALEABLE AREA

SIZE RANGE = 677.70 SQ.FT. - 687.60 SQ.FT.



UNIT



List of unit numbers with this unit plan:

## VIEWS

### Hartland, Waterfront

C0708, C0709\*, C0808, C0809\*, C0908, C0909\*, C1008, C1009\*, C1106, C1107\*, C1202, C1203\*

### Downtown, Hartland, Waterfront

C1608, C1609\*, C1708, C1709\*, C1808, C1809\*, C1908, C1909\*, C2008, C2009\*, C2108, C2109\*, C2208, C2209\* C2308, C2309\*

### Downtown, BK, Hartland, Waterfront

C2408, C2409\*, C2508, C2509\*, C2608, C2609\*, C2708, C2709\*, C2808, C2809\*, C2908, C2909\*, C3008, C3009\*, C3108, C3109\*, C3208, C3209\*, C3308, C3309\*

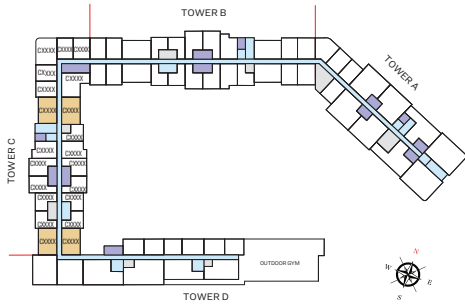
\* These apartments have mirrored units plans of the above

# 2 BEDROOM APARTMENT

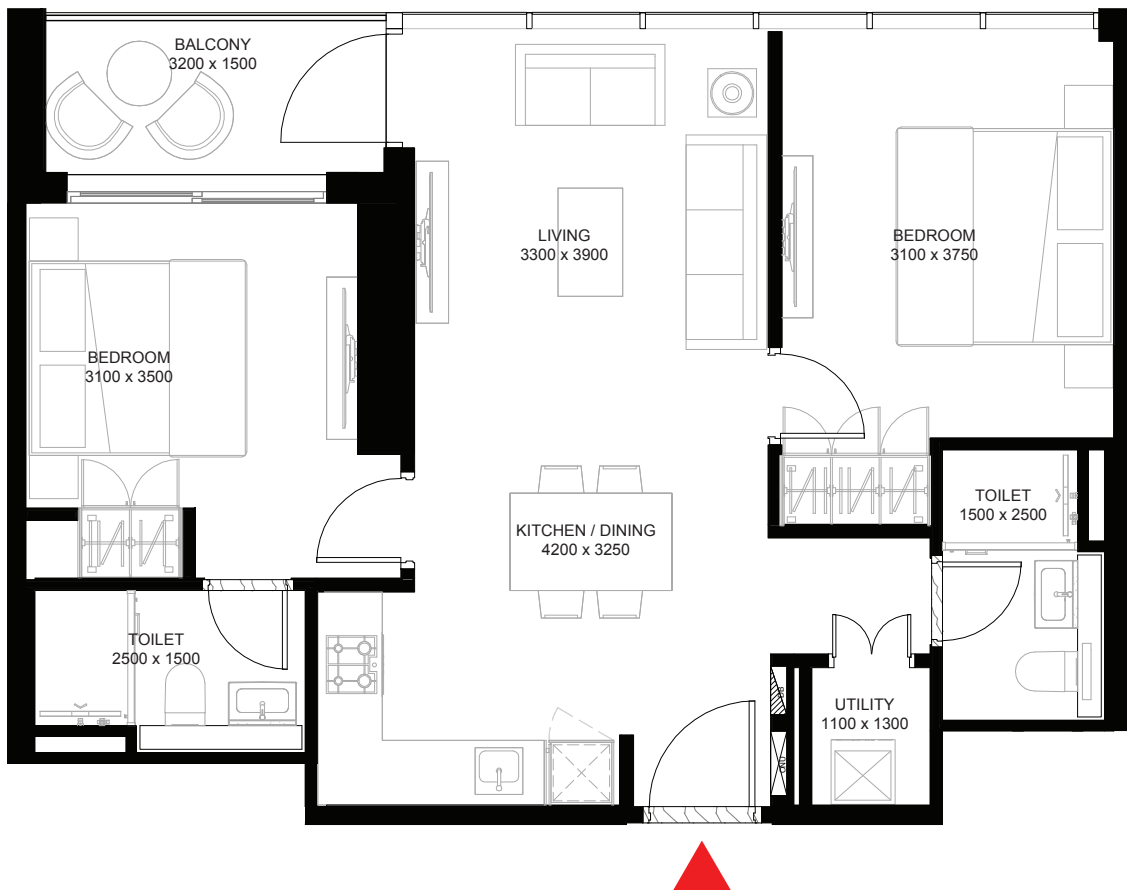
TYPE A (with balcony)

TOTAL SALEABLE AREA

SIZE RANGE = 790.39 SQ.FT. - 806.86 SQ.FT.



UNIT



List of unit numbers with this unit plan:

## VIEWS

### Amenities

C0704, C0718\*, C0804, C0818\*, C0904, C0918\*, C1004, C1018\*, C1116\*, C1212\*, C1304\*

### Hartland

C0711\*, C0811\*, C0911\*, C1011\*, C1109\*, C1205\*, C1302\*, C1401

### Hartland, Waterfront

C0705\*, C0805\*, C0905\*, C1005\*

### Amentites, Waterfront

C1403\*

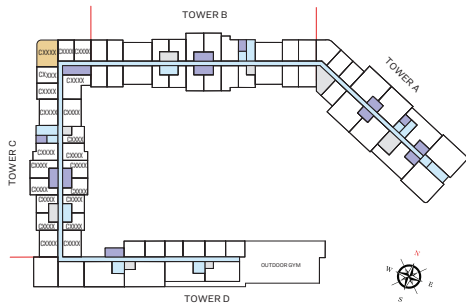
\* These apartments have mirrored units plans of the above

# 2 BEDROOM APARTMENT

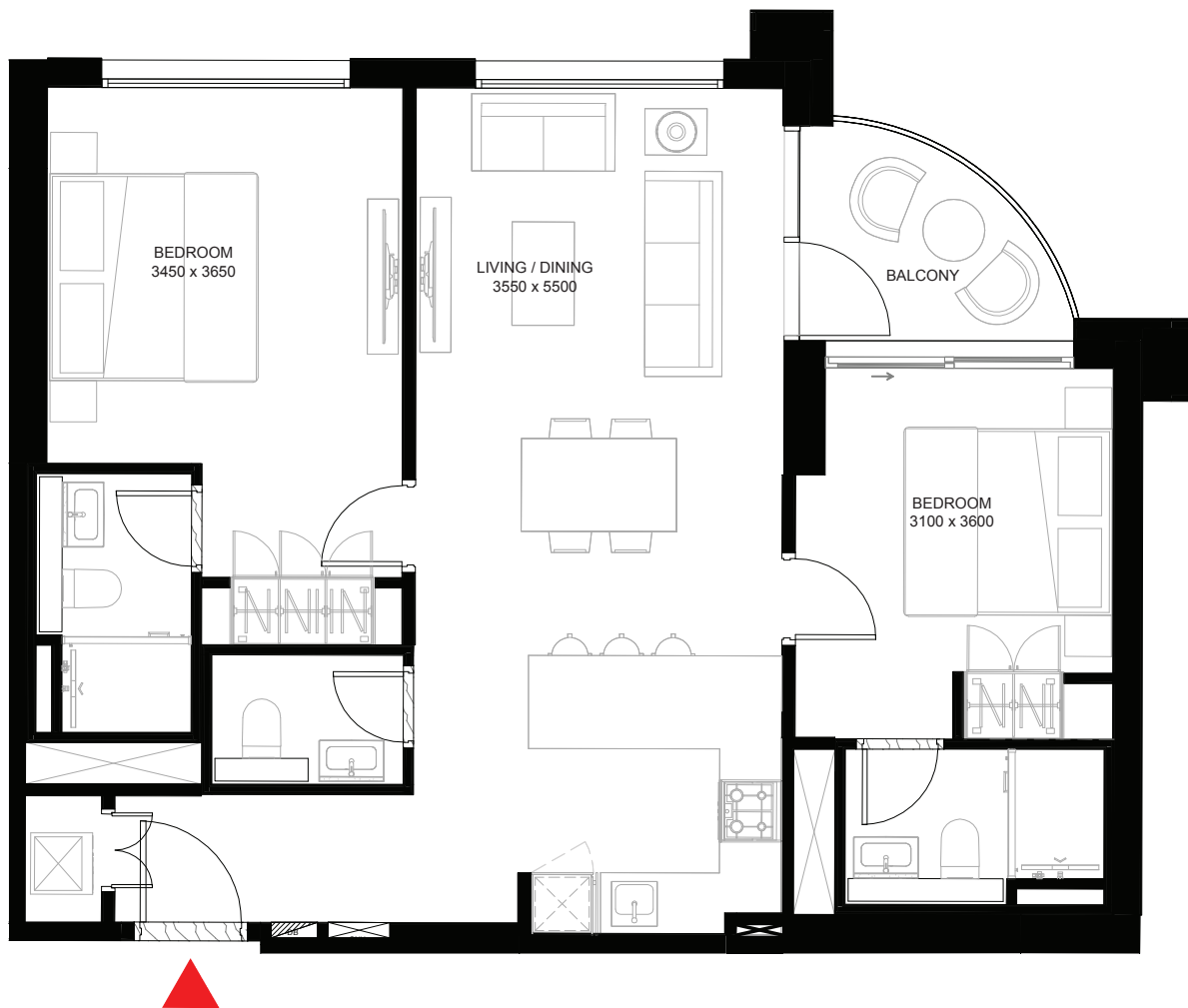
TYPE B (with balcony)

TOTAL SALEABLE AREA

SIZE = 896.96 SQ.FT.



UNIT



List of unit numbers with this unit plan:

## VIEWS

Hartland

C0714, C0814, C0914, C1014, C1112, C1208

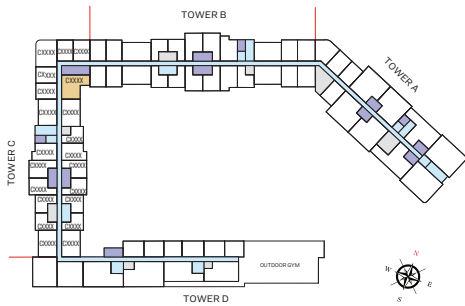
\* These apartments have mirrored units plans of the above

# 2 BEDROOM APARTMENT

TYPE C (with balcony)

TOTAL SALEABLE AREA

SIZE RANGE = 913.53 SQ.FT. - 919.67 SQ.FT.



UNIT



List of unit numbers with this unit plan:

## VIEWS

### Amenities

C0717, C0817, C0917, C1017, C1115, C1211, C1303

### Amentities, Waterfront

C1402, C1507

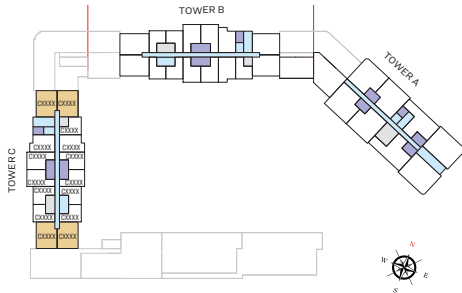
\* These apartments have mirrored units plans of the above

# 2 BEDROOM APARTMENT

TYPE A (with study/store + balcony)

TOTAL SALEABLE AREA

SIZE RANGE = 1,047.97 SQ.FT. -1,058.09 SQ.FT.



UNIT



List of unit numbers with this unit plan:

## VIEWS

### Downtown, BK, Hartland

C2411\*, C2511\*, C2611\*, C2711\*, C2811\*, C2911\*, C3011\*, C3111\*, C3211\*, C3311\*

### Downtown, BK, Hartland, Amenities, Waterfront

C2412\*, C2512\*, C2612\*, C2712\*, C2812\*, C2912\*, C3012\*, C3112\*, C3212\*, C3312\*

### Downtown, Hartland

C1711\*, C1811\*, C1911\*, C2011\*, C2111\*, C2211\*, C2311\*

### Hartland, Waterfront

C1504\*, C1605\*, C1705\*, C1805\*, C1905\*, C2005\*, C2105\*, C2205\*, C2305\*, C2405\*, C2505\*

### Downtown, BK, Hartland, Waterfront

C2605\*, C2705\*, C2805\*, C2905\*, C3005\*, C3105\*, C3205\*, C3305\*

### Downtown, Hartland, Amenities, Waterfront

C1812\*, C1912\*, C2012\*, C2112\*, C2212\*, C2312\*

### Amentites, Waterfront

C1503, C1604, C1704, C1712\*, C1804, C1904, C2004, C2104, C2204, C2304, C2404, C2504, C2604, C2704, C2804, C2904, C3004, C3104, C3204, C3304

\* These apartments have mirrored units plans of the above



SOBHA  
REALTY